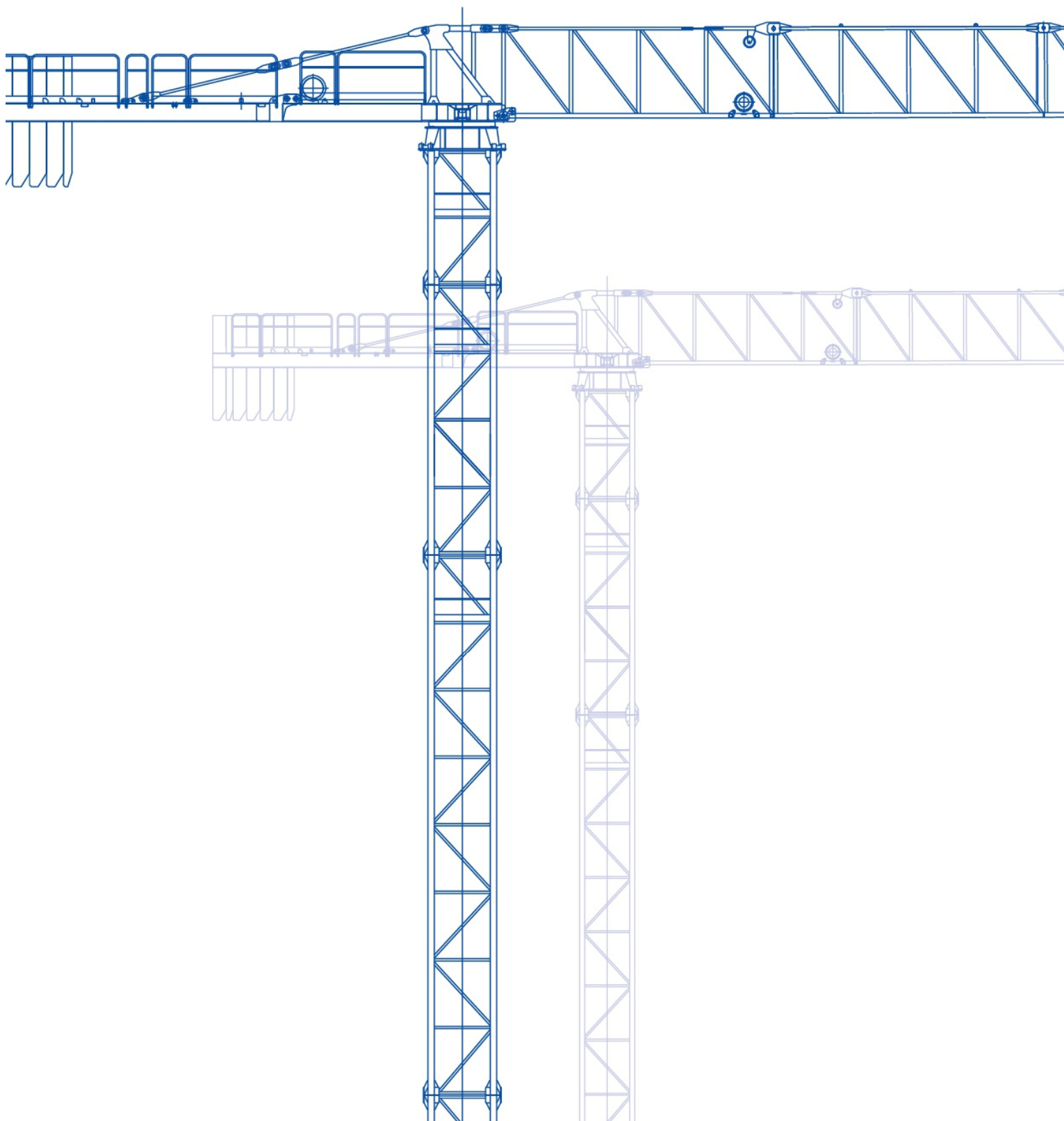




GRU A TORRE "TOPLESS"
"TOPLESS" CITY CRANE

GR35

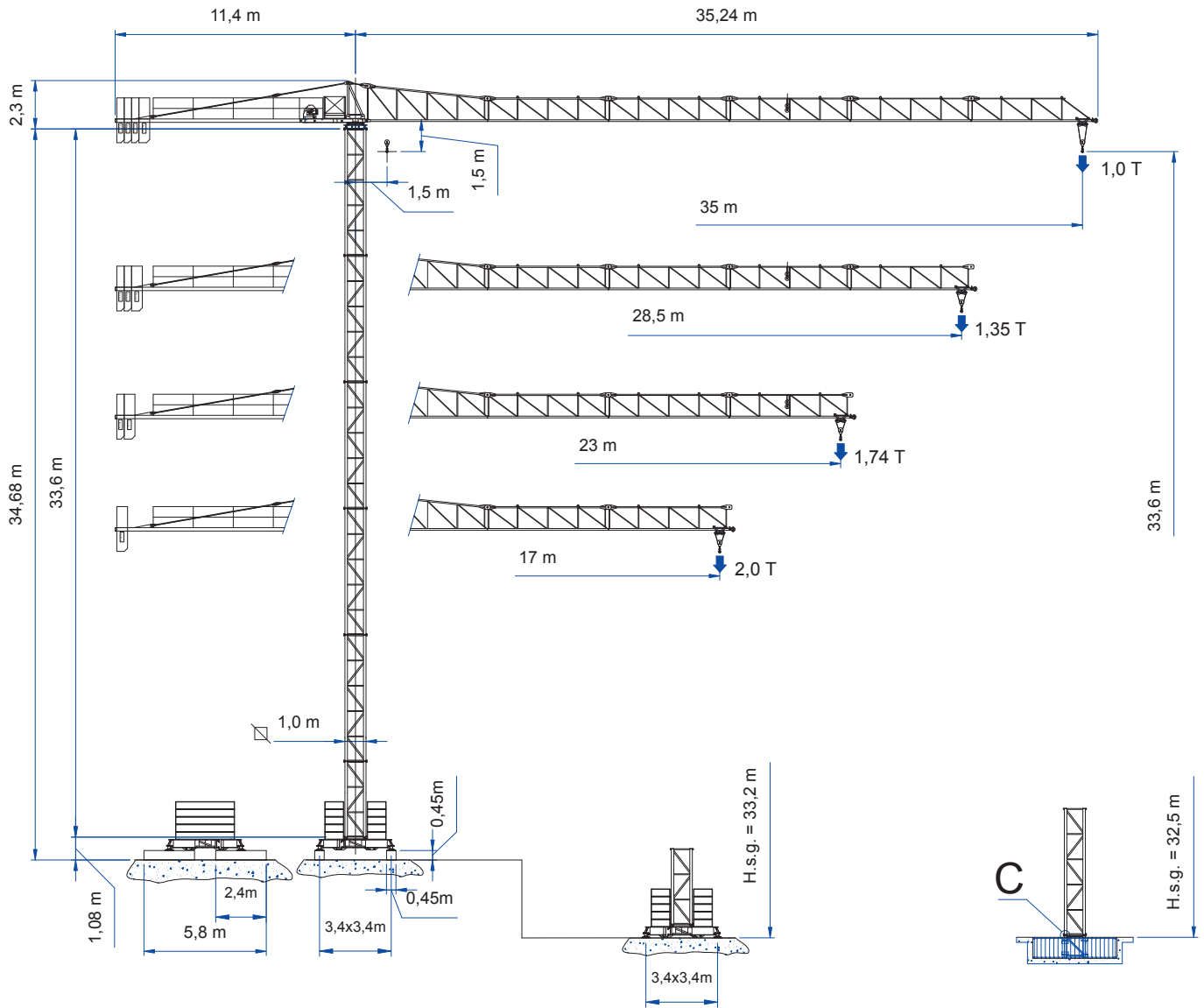


GR35

GRU A TORRE "TOPLESS"
"TOPLESS" CITY CRANE

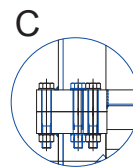


CE - 
FEM 1,001 A3

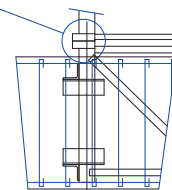
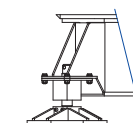
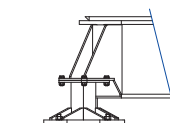
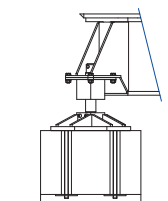


B1

B2



T4



B1

B2

B2

T4

Dati illustrativi non impegnativi
Con riserva di modifica
senza preavviso

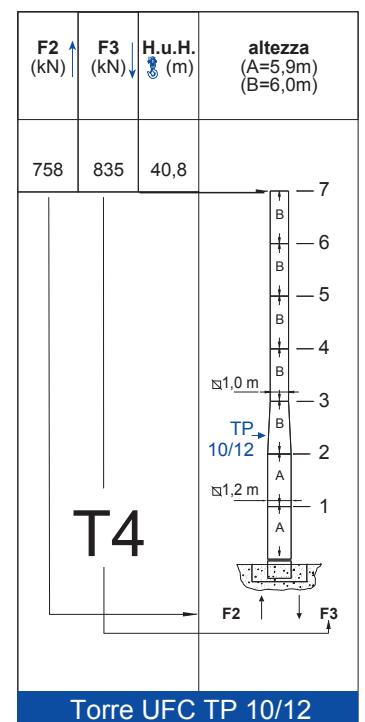
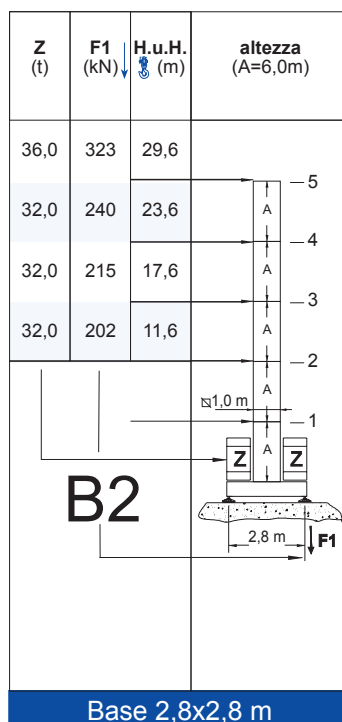
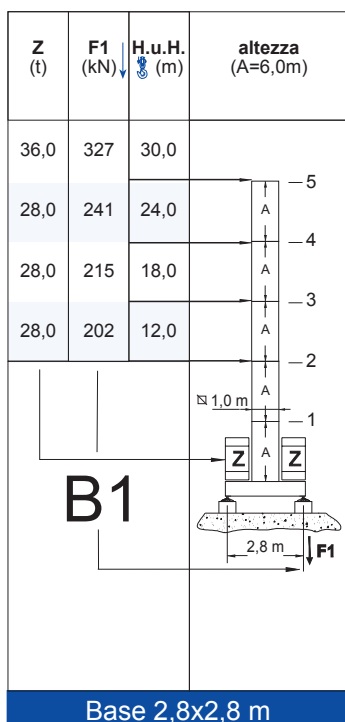
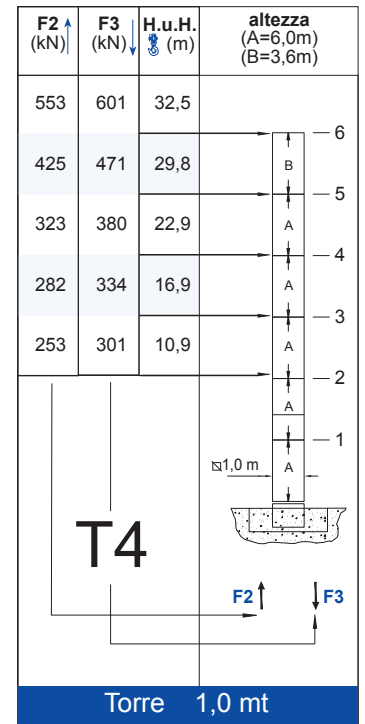
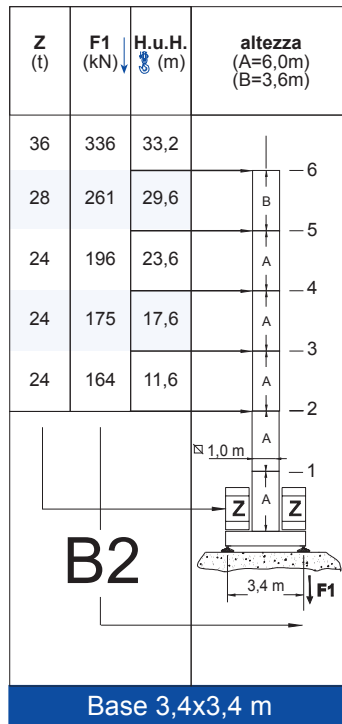
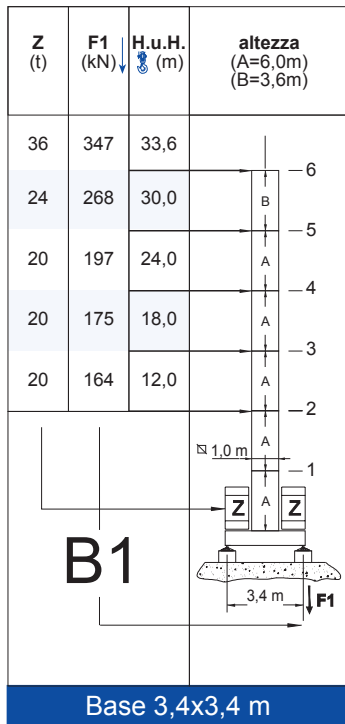
Specifications and data
not binding
Subject to modification without notice

Angaben und Beschreibung
unverbindlich
Änderungen vorbehalten ohne weitere
Mitteilung

Donné es techniques seulement
indicatives
Modifications ré servé es sans pré avis

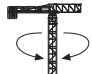
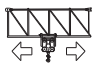

TORRE/REAZIONI

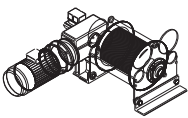


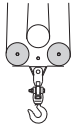
MAT/RÉACTIONS MASTE/ECKDRÜCKE MAST/REACTIONS MÁSTIL/REACCIONES TRAMO/REACÇÕES



MECCANISMI

MÈCANISMES ANTRIEBE MECHANISMS MECANISMOS

	giri/min	m/min	Nm	Kw
	1,02	-	35	-
	-	20/40	-	1,4
	-	-	-	-

				marcia - step vitesse - gang		
	CV - ch PS - hp	KW			m	m/min
8 3S 20	12	8,8	90	1	5,5	2
				2	22	2
				3	44	1

Potenza totale richiesta		400 V - 50 Hz
Total installed power		
Puissance totale né cessaire	8 3S 20 - 16kVA	
Geforderte Stromstärke		
Potencia necesaria		

PESI ED INGOMBRI

PACKING LIST LISTE DE COLISAGE KOLLI-LISTE

Pos. Item	Pezzi Pieces	Denominazione Description	Schizzo Sketch	Dimensioni Dimensions (m)			Peso Weight (Kg)		
				L	W	H	Unit	Total.	
1	1	Elemento di freccia Jib element Elèment de flè che ausleger	N° 1	5,930	0,790	1,930	*	615	
	1		N° 2	5,985	0,790	1,190	*	364	
	1		N° 3	5,985	0,790	1,190	*	321	
	1		N° 4	5,985	0,790	1,190	*	297	
	1		N° 5	5,985	0,790	1,190	*	263	
	1		N° 6	5,860	0,790	1,190	*	238	
2	Freccia Flè che Jib Ausleger			35 m 28,5m 23m 17m	34,8 29,1 23,4 17,6	0,790 0,790 0,790 0,790	2,040 2,040 2,040 2,040	* * * *	2098 1860 1597 1300
3	1	Controfreccia girevole, argano di sollev., quadro elettrico Counterjib-turntable, hoisting winch, electrical box etc. Contreflè che tournante, treuil de levage, armoire électrique. Gegenausleger, Hubwinde, Drehwerk Schaltschrank.		3,75	1,705	2,3	*	1925	
	1	Elemento controfreccia esterno External counterjib Contreflè che extèrieure Externes gegenausleger		9,1	0,875	1,23	*	795	
4	3	Blocchi di contappeso Counterweight block Contre-poids Gegengewichtsblöcke		A 350	0,600	0,35	2,145	814	2442
	1			B 510	0,600	0,51	2,145	*	1192
5	1	Elemento di torre Tower element Elèment de mature Turmstück		6,0	1,11	1,11	*	853	
				3,6	1,11	1,11	*	521	
				2,4	1,11	1,11	*	412	
6	1	Tronchetto di fondazione Expendable foundation element Elèment a sceller - Fundamentanker		1,075	1,11	1,11	*	309	

*(Unit = Total)

Pos Item	Pezzi Pieces	Denominazione Description	Schizzo Sketch	Dimensioni (m)			Peso (Kg)		
				L	W	H	Unit	Total.	
7	1	Trave principale di base Base main Beam Poutre de Chassis de base Hauptträger für kreuzgelenk		TP (2,8x2,8m)	4,16	2,4	0,605	*	1083
				TP (3,4x3,4m)	5,01	2,4	0,605	*	1154
	2	Semi-trave di base Half base beam Semipoutre de chassis de base Hauptträger tür kreuzgelenk		TP (2,8x2,8m)	1,15	0,3	0,49	172	344
				TP (3,4x3,4m)	1,575	0,3	0,49	225	450
8	18	Blocco di zavorra Base ballast block (B28-09)		(2,8x2,8m)	2,800	0,900	0,360	2000	36000
	18	Lest de base Grundballastblöcken		(3,4x3,4m)	2,800	0,900	0,360	2000	36000
9	4	Blocco di appoggio Concrete pad Sabot en béton Betonfuss (BA2)		2,400	0,450	0,450	1000	4000	

*(Unit = Total)

Torre City 1,2mt

Pos Item	Pezzi Pieces	Denominazione Description	Schizzo Sketch	Dimensioni (m)			Peso (Kg)	
				L	W	H	Unit	Total.
10	1	Elemento di torre TP 1,0/1,2m TP 1,0/1,2m Tower element TP 1,0/1,2m Élément de mature TP 1,0/1,2m Turmstück		6,0	1,2	1,38	*	1515
11	1	Elemento di torre Tower element Élément de mature Turmstück		5,9	1,2	1,38	*	1620
12	1	Tronchetto di fondazione Expendable foundation element élément a sceller Fundamentanker		1,090	1,38	1,38	*	455

*(Unit = Total)

<p>B 3.4x3.4m Tot. 1604 Kg. B 2.8x2.8m Tot. 1427 Kg.</p>	<p>6.0 / 853 Kg. 3.6 / 521 Kg. 2.4 / 412 Kg.</p>	<p>B 28-09 / 2000 Kg.</p>
<p>795 Kg.</p>	<p>1925 Kg.</p>	<p>2720 Kg.</p>