



LC 20-10

GRU A BRACCIO IMPENNABILE
LUFFING JIB CRANE
GRUES À FLÈCHE RÈLEVABLE
VERSTELL AUSLEGER KRANEN



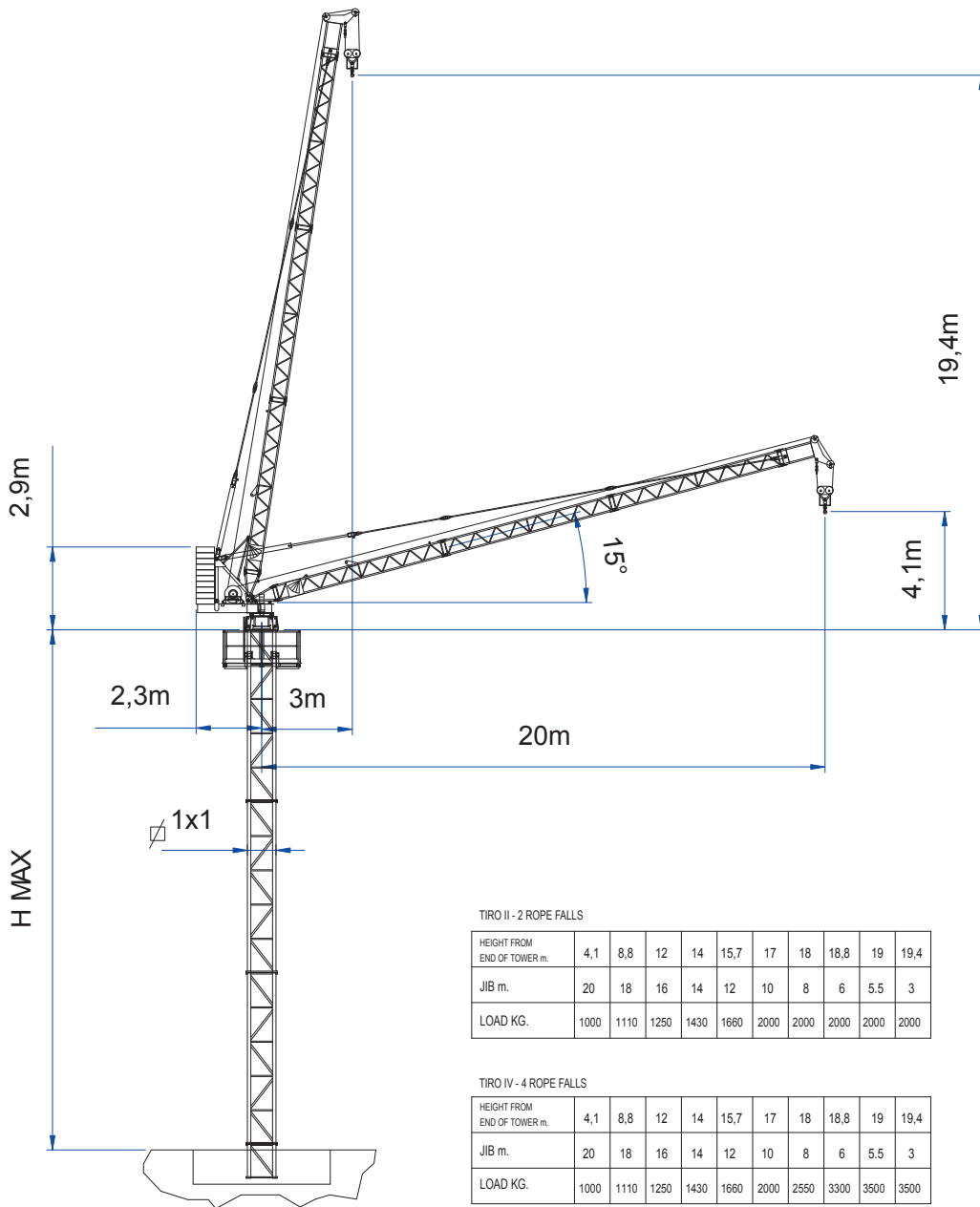
TGM CRANES

Scheda tecnica
Technical Data sheet
Spécifiques Techniques
Technische Spezifikationen

LC 20-10

GRU A BRACCIO IMPENNABILE
LUFFING JIB CRANE

CE - 
FEM 1,001 A3



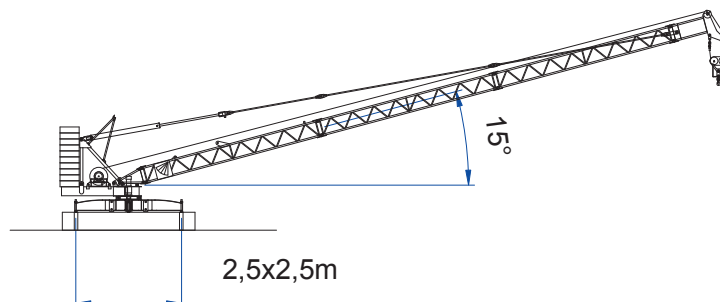
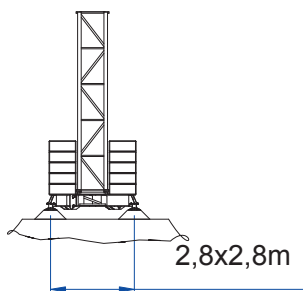
TIRO II - 2 ROPE FALLS

HEIGHT FROM END OF TOWER m.	4,1	8,8	12	14	15,7	17	18	18,8	19	19,4
JIB m.	20	18	16	14	12	10	8	6	5.5	3
LOAD KG.	1000	1110	1250	1430	1660	2000	2000	2000	2000	2000

TIRO IV - 4 ROPE FALLS

HEIGHT FROM END OF TOWER m.	4,1	8,8	12	14	15,7	17	18	18,8	19	19,4
JIB m.	20	18	16	14	12	10	8	6	5.5	3
LOAD KG.	1000	1110	1250	1430	1660	2000	2550	3300	3500	3500

Max H under hook partline I 200 m
Max H under hook partline II 100 m



Dati illustrativi non impegnativi
Con riserva di modifica
senza preavviso







Specifications and data
not binding
Subject to modification without notice




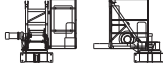
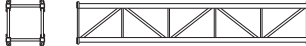

Angaben und Beschreibung
unverbindlich
Änderungen vorbehalten ohne weitere
Mitteilung

Données techniques seulement
indicatives
Modifications réservées sans préavis

DESCRIZIONE




DESCRIPTION

COMPONENTS WEIGHT AND OVERALL DIMENSIONS		Kg.
Arms for concrete pads		95X4
Hydraulic pistons		300
Cross-base main beam and two arms		1000 200X2
Cross-base ballast block		2000
Counterweight block		500X10
Concrete Pads		4000x4

COMPONENTS WEIGHT AND OVERALL DIMENSIONS		Kg
First and terminal Jib element		120 185
Intermediate Jib element		268x3
Complete Jib tie-rod Swivel block		1396
Counterjib - Turntable service and access balcony lifting drum ect.		2200
Tower element		985
Tower element adapter		180

MECCANISMI

MECHANISMS

Sollevamento Hoisting		m/min	Kg	Kw		70 s	7.5 KW			
		0-80	500	9.5KW				Rotazione Sewing	0-0.9giri/min rpm	1.5 KW
		0-40	1000	9.5KW						
	0-20	1800	9.5KW							
		0-10		3500						

Rev. "0913"



TGM CRANES

 CORSO ITALIA, 54 • 20813 BOVISIO MASCIAGO • MB ITALY

 +39 335 638 7647

 info@tgmcostruzioni.com

 www.tgmcostruzioni.com

