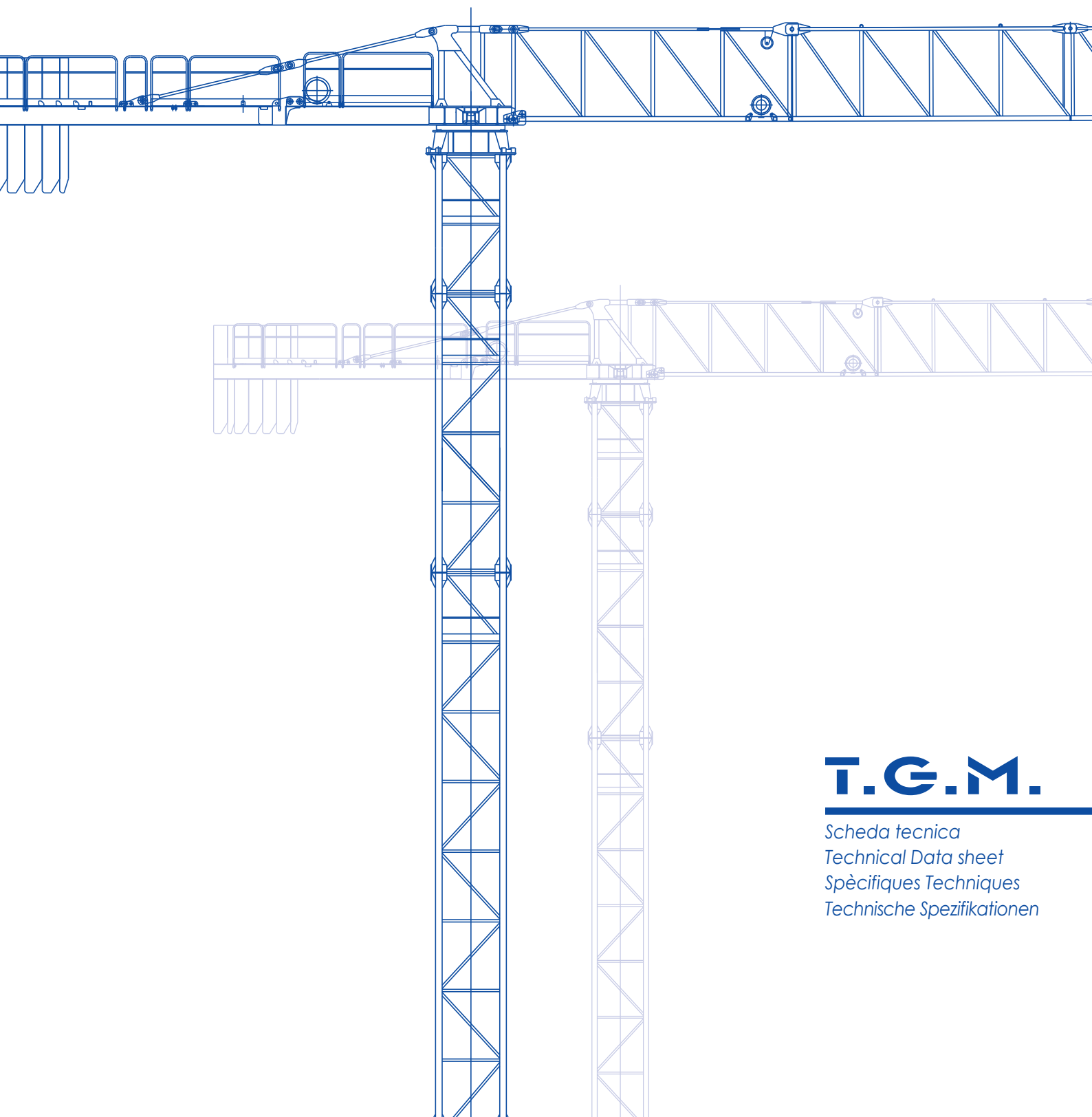




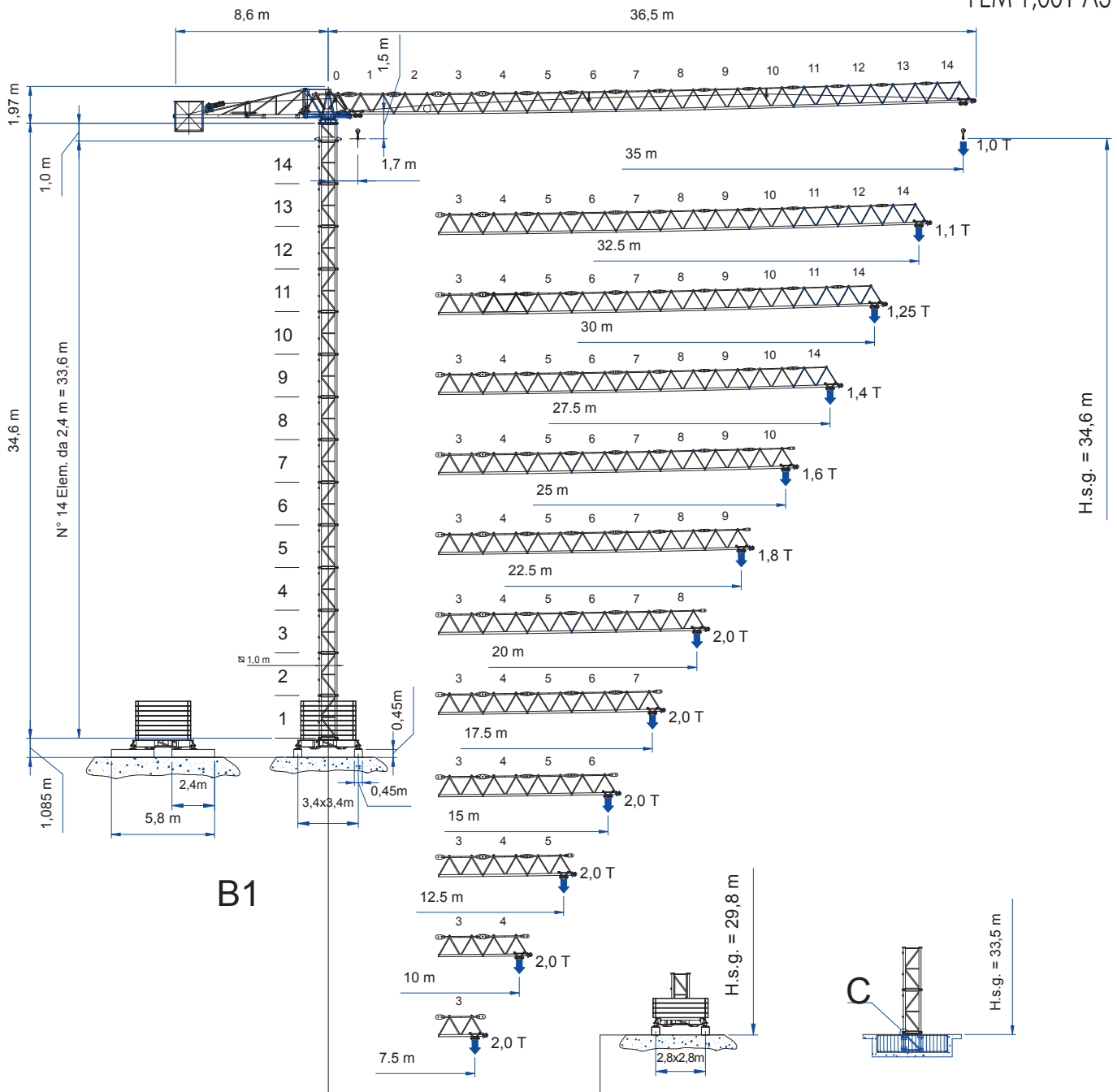
GRU A TORRE "TOPLESS"
"TOPLESS" CITY CRANE

VR35



T.G.M.

Scheda tecnica
Technical Data sheet
Spécifiques Techniques
Technische Spezifikationen



B1

B2

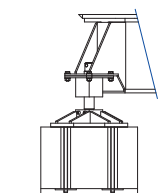
T4

Dati illustrativi non impegnativi
Con riserva di modifica
senza preavviso

Specifications and data
not binding
Subject to modification without
notice

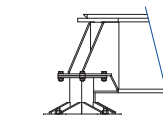
Angaben und Beschreibung
unverbindlich
Änderungen vorbehalten ohne
weitere Mitteilung

Données techniques seulement
indicatives
Modifications réservées sans
préavis



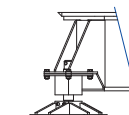
B1

Su Zatterone con
stabilizzatore regolabile



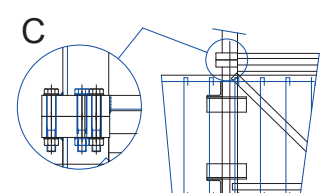
B2

Stabilizzatore
fisso



B2

Stabilizzatore
regolabile



T4

Tronchetto di
fondazione

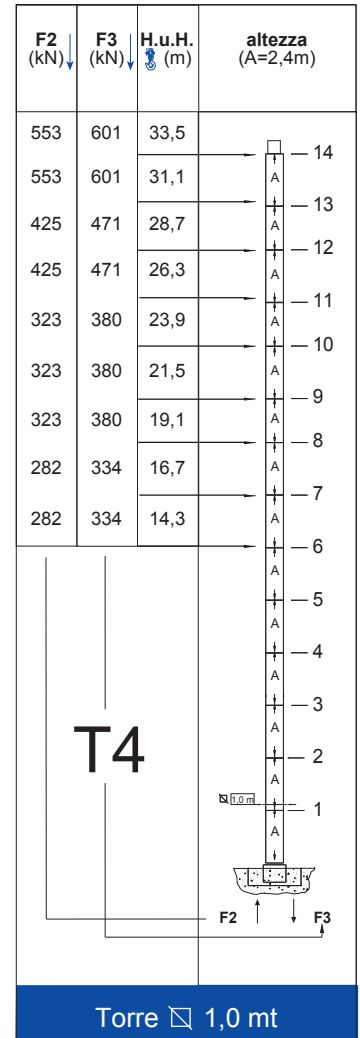
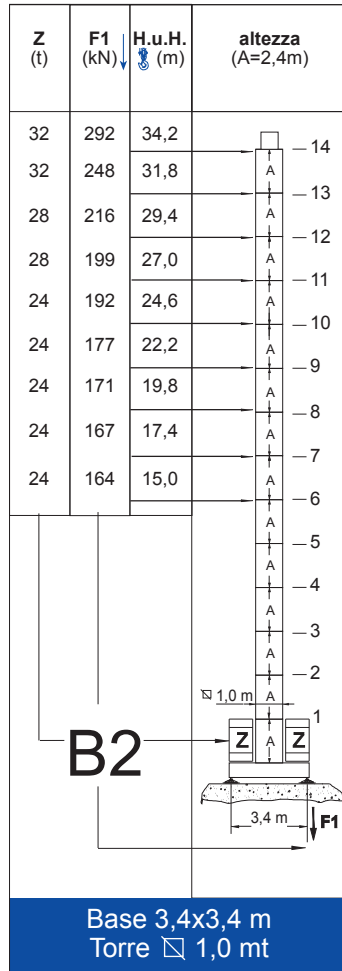
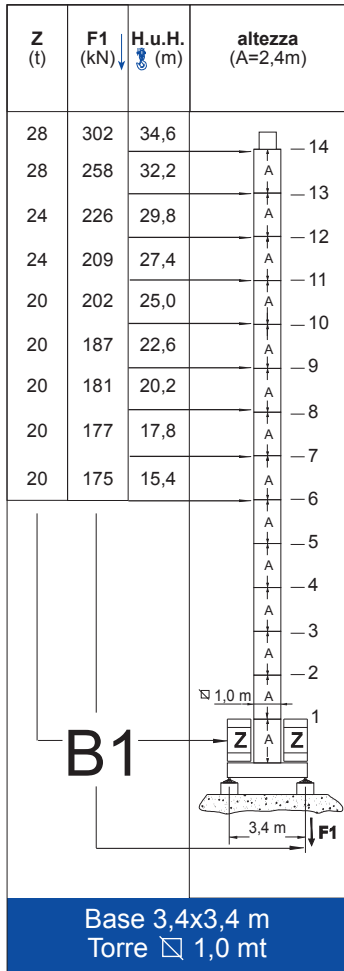
CURVE DI CARICO

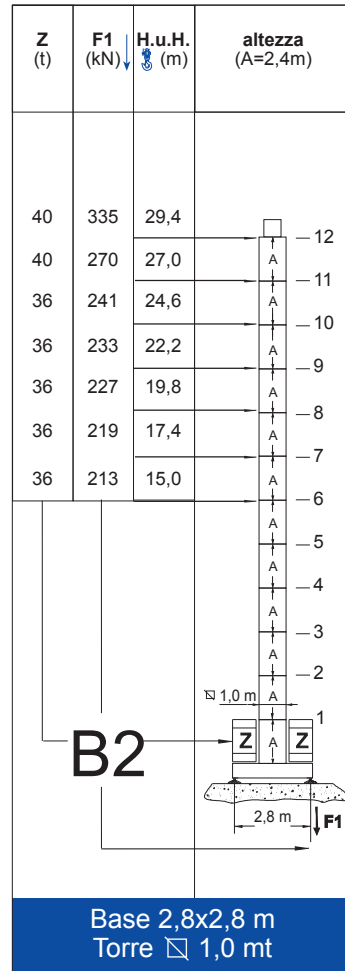
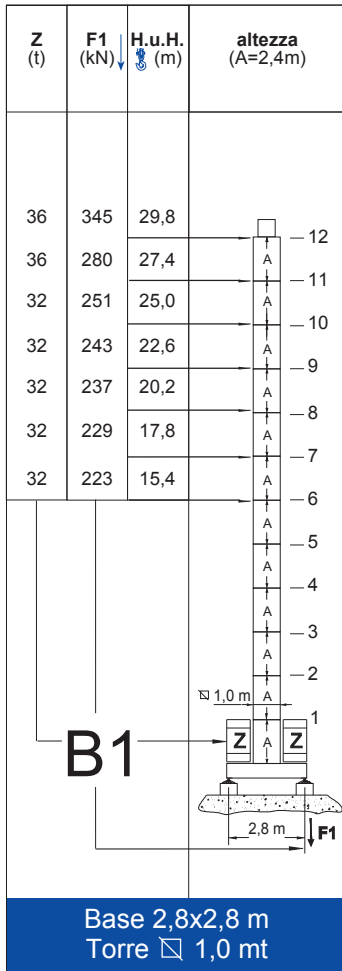
CARGO CURVES LOAD DIAGRAMS COURBES DE CHARGES

		Portata max - Max s.w.l. - Charge maxi																												L ₀ 2,0 t		
m.		7,5	8	9	10	11	12,5	13	14	15	16	17,5	18	19	20	21	22,5	23	24	25	26	27,5	28	29	30	31	32,5	33	35	m.	t	
35		2,0	2,0	2,0	2,0	2,0	2,0	2,0	2,0	2,0	2,0	2,0	2,0	19,3	1,85	1,75	1,67	1,59	1,52	1,45	1,39	1,33	1,28	1,23	1,18	1,14	1,1	1,06	1,0	35	m.	t
32,5		2,0	2,0	2,0	2,0	2,0	2,0	2,0	2,0	2,0	2,0	2,0	2,0	1,98	1,87	1,77	1,69	1,61	1,53	1,47	1,4	1,35	1,28	1,24	1,2	1,16	1,1	32,5	m.	t		
30		2,0	2,0	2,0	2,0	2,0	2,0	2,0	2,0	2,0	2,0	2,0	2,0	1,94	1,84	1,75	1,67	1,59	1,52	1,46	1,4	1,34	1,28	1,25	30	m.	t					
27,5		2,0	2,0	2,0	2,0	2,0	2,0	2,0	2,0	2,0	2,0	2,0	2,0	1,98	1,87	1,78	1,7	1,62	1,55	1,48	1,4	27,5	m.	t								
25		2,0	2,0	2,0	2,0	2,0	2,0	2,0	2,0	2,0	2,0	2,0	2,0	2,0	2,0	1,93	1,83	1,75	1,67	1,6	25	m.	t									
22,5		2,0	2,0	2,0	2,0	2,0	2,0	2,0	2,0	2,0	2,0	2,0	2,0	2,0	2,0	1,94	1,8	22,5	m.	t												
20		2,0	2,0	2,0	2,0	2,0	2,0	2,0	2,0	2,0	2,0	2,0	2,0	2,0	2,0	20	m.	t														
17,5		2,0	2,0	2,0	2,0	2,0	2,0	2,0	2,0	2,0	2,0	2,0	17,5	m.	t																	
15		2,0	2,0	2,0	2,0	2,0	2,0	2,0	2,0	15	m.	t																				
12,5		2,0	2,0	2,0	2,0	2,0	12,5	m.	t																							
10		2,0	2,0	2,0	10	m.	t																									
7,5		7,5	2,0	7,5	m.	t																										

TORRE/REAZIONI

MAT RÉACTIONS MASTE/ECKDRÜCKE MAST/REACTIONS MÁSTIL/REACCIONES TRAMO/REACÇÕES





MECCANISMI

MÈCANISMES ANTRIEBE MECHANISMS MECANISMOS

	giri/min	m/min	Nm	Kw
	1,02	-	55	2
	-	20 / 40	-	1,4
	-	-	-	-

				marcia - step vitesse - gang		
	CV - ch PS - hp	KW			m	m/min
8 3S 20	12	8,8	90	1	5,5	2
				2	22	2
				3	44	1

Potenza totale richiesta		400 V - 50 Hz
Total installed power		
Puissance totale nécessaire	8 3S 20 - 16 kVA	
Geforderte Stromstärke		
Potencia necesaria		

PESI ED INGOMBRI

PACKING LIST LISTE DE COLISAGE KOLLI-LISTE

Pos. Item	Pezzi Pieces	Denominazione Description	Schizzo Sketch	Dimensioni Dimensions (m)			Peso Weight (Kg)		
				L	W	H	Unit	Total.	
1	1	Elemento di freccia Jib element Elément de flèche ausleger	N° 1	2,506	0,63	1,23	*	360	
	1		N° 2	2,806	0,63	1,23	*	264	
	1		N° 3	2,806	0,63	1,23	*	408	
	1		N° 4	2,806	0,63	1,23	*	233	
	1		N° 5	2,806	0,63	1,23	*	197	
	1		N° 6	2,806	0,63	1,23	*	178	
	2		N° 7	2,737	0,63	1,2	172	344	
	3		N° 8	2,737	0,63	1,2	147	441	
	3		N° 9	2,690	0,63	1,18	125	375	
	1		N° 10	2,600	0,63	1,18	*	120	
2	Freccia Flèche Jib Ausleger		35 m	32,63	0,63	1,3	*	2296	
			32,5 m	30,13	0,63	1,3	*	2176	
			30 m	27,63	0,63	1,3	*	2051	
			27,5 m	25,13	0,63	1,3	*	1926	
			25 m	22,63	0,63	1,3	*	1801	
			22,5 m	20,03	0,63	1,3	*	1654	
			20 m	17,63	0,63	1,3	*	1507	
			17,5 m	15,13	0,63	1,3	*	1360	
			15 m	12,63	0,63	1,3	*	1188	
			12,5 m	10,13	0,63	1,3	*	1016	
			10 m	7,63	0,63	1,3	*	838	
7,5 m	5,13	0,63	1,3	*	641				
3	1	Elemento porta-blocchi Element for counterweight. Element terminal Gegenwichtelement		1,7	0,76	1,7	*	200	
	1	Controfreccia, argano sollevamento. Counterjib, hoisting winch. Contreflèche, treuil de lavage Gegenausleger, Hubwinde		4,25	1,01	1,7	*	1160	
	1	Elemento controfreccia centrale. Central counterjib section Contreflèche centre Internes Gegenauslegerteil		3,37	0,85	1,66	*	440	
	1	Controfreccia girevole, quadro elettrico Counterjib-turnstile, electrical box. Contreflèche tournante, armoire électrique Gegenausleger, Hubwinde, Drehwerk Laufkanze,		2,73	1,13	1,97	*	1070	
4	12	Blocchi di contrappeso Counterweight block Contre-poids Gengewichtsbloecke		Blocco VR-140	1,55	0,64	0,14	460	5520
5	1	Elemento di spinta Climbing cage connection frame Element de telescopage Turmstück		1,0	1,11	1,51	*	312	

*(Unit = Total)

PESI ED INGOMBRI

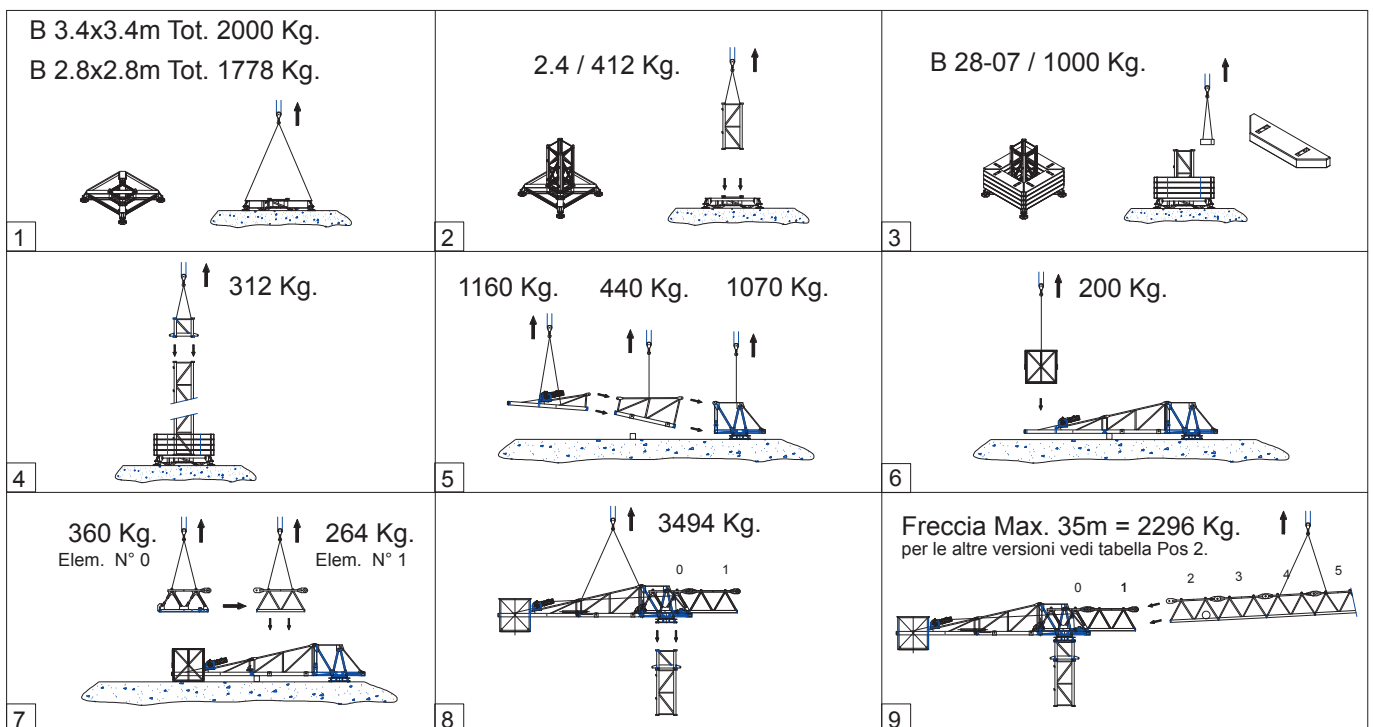
PACKING LIST LISTE DE COLISAGE KOLLI-LISTE

Pos Item	Pezzi Pieces	Denominazione Description	Schizzo Sketch	Dimensioni Dimensions (m)			Peso Weight (Kg)		
				L	W	H	Unit	Total.	
6	1	Elemento di torre Tower element Element de mature Turmstück		2,4	1,11	1,11	*	377	
7	1	Gabbia di montaggio External climbing Telescopable Kletterkrane		4,735	1,6	1,54	*	1350	
8	1	Tronchetto di fondazione Expendable foundation element élément a sceller Fundamentanker		1,075	1,11	1,11	*	334	
9	1	Trave principale di base Base main beam Poutre de châssis de base		TP (2,8x2,8m)	4,16	2,4	0,605	*	1170
				TP (3,4x3,4m)	5,01	2,4	0,605	*	1284
	2	Semi - trave di base Half base bean Semi-poutre de châssis de base		TP (2,8x2,8m)	1,15	0,3	0,49	232	464
				TP (3,4x3,4m)	1,575	0,3	0,49	286	572
4	Collegamenti di appoggio Support strut Hauban de châssis strützhalm		2,275	0,06	0,14	36	144		
10	40	Blocco di zavorra Base ballast block Lest de base Grundballastblöcken		TP (2,8x2,8m)	2,800	0,700	0,275	1000	40000
	32			TP (3,4x3,4m)	2,800	0,700	0,275	1000	32000

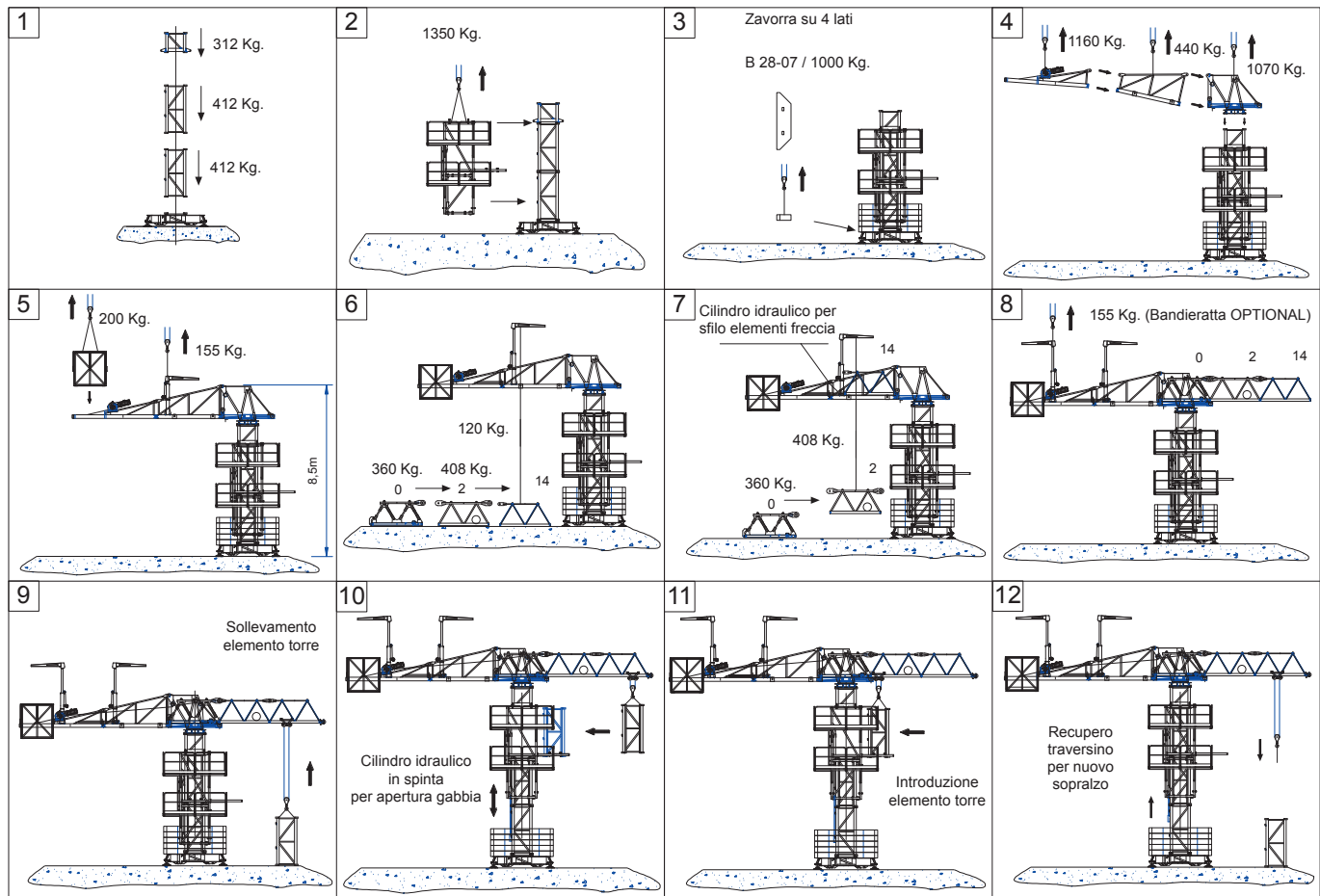
*(Unit = Total)

MONTAGGIO CON AUTOGRU

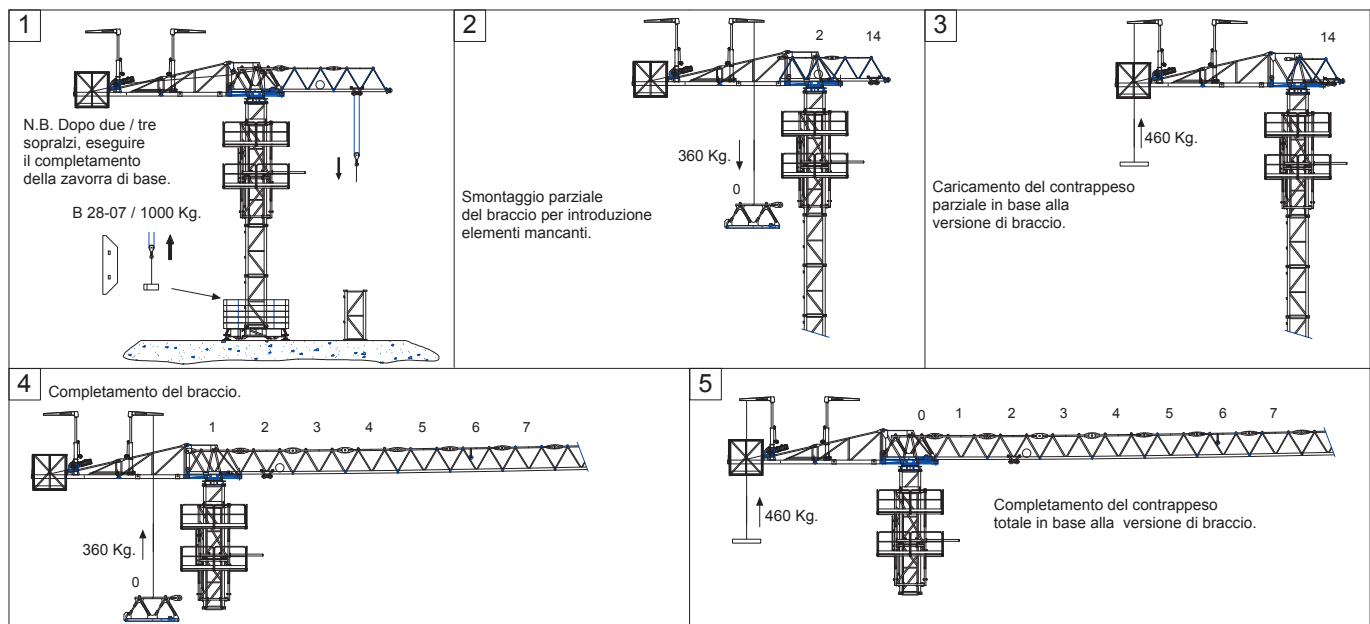
ASSEMBLY MONTAGE VERSAMMLUNG



SEQUENZA DI MONTAGGIO MINIMO CON AUTOMEZZI DA CANTIERE PER SOPRALZO IDRAULICO



PROSEGUIMENTO DEL MONTAGGIO COMPLETO



SOPRALZO IDRAULICO versione HC - 100

EXTERNAL CLIMBING KLETTERKRANE TELESCOPABLE

